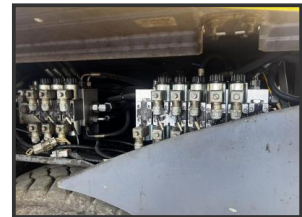




# PETER MARUS.com

Road Equipment Suppliers

## VOGELE SUPER 1803-3i



### £POA

Vögele Super 1803-3i, Year 2017, 5,000 hours in excellent working condition. The machine comes complete with 2 handsets. 6 Cylinder cooled Cummins Diesel Engine. Augers and chains serviced and in very good order. Standard width 2.5M, maximum Screed width 8M. Weight 19,100 KG.

Please call for more details. Kindly note this machine is available for viewing in Surrey UK by appointment

#### Product Details

Product Details	
<b>Category/Type</b>	<b>Asphalt Pavers</b>
<b>Make</b>	<b>VOGELE</b>
<b>Model</b>	<b>SUPER 1803-3i</b>
<b>Year</b>	<b>2014</b>
<b>Hours</b>	<b>5,000</b>

High Cogges, Nr Witney, Oxfordshire, OX29 6UN

Simon Marus: +44 (0)7760 227610 Tara Marus: +44 (0)7767 891400

www.petermarus.com simonmarus@icloud.com tamarus@icloud.com